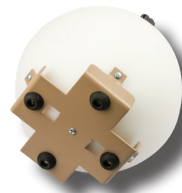


LUDLUM MEASUREMENTS, INC.

Model 30-4 Neutron Detector with Digital Display

Features

- Multi-Function Digital Display Unit
- Low-Weight Device Substitutes for Ratemeter
- Simple Switching Between Two Sets of Measurement Units
- Moderated Neutron Detector
- Range: 0 –99.9 mSv/h (0–9.99 rem/hr)
- Display Unit Detaches for Greater Versatility



upper left: detail of display unit
lower left: base of instrument

Specifications

Part Number: 48-4191

INDICATED USE: Neutron dose rate

DETECTOR: ³He proportional detector, 1.6 x 2.5 cm (0.6 x 1.0 in.) (D x L), surrounded by a 22.9 cm (9.0 in.) diameter cadmium loaded polyethylene sphere

MEASUREMENT RANGE: 0 to 99.9 mSv/h (0 to 9.99 rem/hr)

SENSITIVITY: Typically 10 cpm per μ Sv/h (100 cpm per mrem/hr) (bare AmBe neutrons)

ENERGY RESPONSE: Provides appropriate inverse RPG curve for neutrons from thermal through 7 MeV, provides response up to 12 MeV

LINEARITY: Reading within 10% of actual value

GAMMA REJECTION: < 10 cpm through 0.1 Sv/hr (10 R/hr) (¹³⁷Cs gamma)

LCD DISPLAY: 3 digit LCD with large 13.4 mm (0.53 in.) digits, (k)cps, (k)cpm, (μ)(m)Sv(/h), (μ)(m)rem(/h), low-battery indicator, MAX, ALARM, MUTE

DISPLAY RANGE: 0.0 cps to 99.9 kcps; 0.00 cpm to 999 kcpm; 0.00 rem/hr to 999 rem/hr; 0.00 μ Sv/h to 999 Sv/h. Display range can be set to limit display to calibrated range

BACKLIGHT: Built-in ambient light sensor automatically activates low-power LED backlight, unless internal dipswitch is set to continuous-on (will reduce battery life). Alarm light intensity varies based on ambient light levels.

USER CONTROLS:

- ON/OFF/ACK - Press to turn ON; Tap to acknowledge alarms and silence alarm tone; Press to reset Sigma Audio alarm; Turn "click" audio On/Off; Turn Sigma Audio beep On/Off; Hold for OFF
- MODE - Alternates between NORMAL (count rate), MAX (captures peak rate), and COUNT (user-selectable preset count time from 0 to 10 minutes). Number of modes can be reduced in setup.
- UNITS - Changes the units between count rate (cpm, cps), or dose/exposure (μ Sv/h, rem/hr)

RESPONSE TIME: User-selectable from 1 to 60 seconds, or Auto-Response Rate FAST or SLOW

ALARMS: Count rate, exposure/dose, and scaler alarm setpoints adjustable over the display range

OVERLOAD: High count rate saturation protection prevents false display of lower count rates

ZERO PROTECTION: After a user-settable time interval (default 60 seconds) of no pulses from detector, the instrument will flash zero reading and the alarm audio will be triggered

DEAD TIME CORRECTION: Employs first and second order corrections for extended performance

OPERATING VOLTAGE: Approximately 1200 Vdc

THRESHOLD: -2 mV

AUDIO: Greater than 75 dB at 0.6 (2 ft), approximately 4 kHz

POWER: Two alkaline or two rechargeable "AAA" batteries

BATTERY LIFE: Approximately 100 hours of operation, 24-hour low battery warning

CONSTRUCTION: High-impact plastic with water-resistant rubber seals and separate battery compartment

WORKING ENVIRONMENT: Splashproof shields for outdoor use

TEMPERATURE RANGE: -20 to 50 °C (-5 to 122 °F), may be certified for operation from -40 to 65 °C (-40 to 150 °F)

ENVIRONMENTAL RATING: NEMA rating of 3x or IP rating of 52 with audio hole seal option (hole seal option will reduce maximum volume by approximately 10 dB)

SIZE: Display Unit: 8.5 x 8.0 x 4.8 cm (3.4 x 3.1 x 1.9 in.) (H x W x L); Detector: 22.9 cm (9 in.) REM ball with ³He detector (1.6 x 2.5 cm)

WEIGHT: Display Unit: 174 g (0.38 lb); REM Ball Component: 6.6 kg (14.5 lb)

OPTIONS: See website for a list of available options.

Ludlum Measurements, Inc. P.O. Box 810, Sweetwater, Texas 79556

Web: ludlums.com Tel: 800-622-0828 / 325-235-5494 Fax: 325-235-4672 Email: sales@ludlums.com

Note: specifications subject to change without notification. We are not responsible for errors or omissions.

Oct 2021

PEO B.V.

info@gotopeo.com
www.gotopeo.com

The Netherlands

Havenweg 16, 6603 AS Wijchen
+31 (0)24 648 86 88

Belgium

Watermolenstraat 2, B-2910 Essen
+32 (0)3 309 32 09

CoC 34107894

VAT NL807859151B01

IBAN NL29 RABO 0356 1960 46

BIC RABONL2U

