



Dual Attenuation Phantom

GAMMEX4 06 LE

The Gammex4 06 LE Dual Attenuation Phantom gives you the benefit of having two phantoms in one with background attenuation of 0.5 and 0.7 dB/cm/MHz in an side-by-side configuration. Quality control tests over a wide range of frequencies can be performed quickly and easily, providing a comprehensive profile of the scanner's overall image quality - all within a single phantom.

The 4 06 LE phantom is an highly effective instrument for demonstrating superior image quality with challenging high performance ultrasound systems. The phantom incorporates our Tissue Mimicking gel which provides a smooth background texture, and a composite film scanning surface that has improved transmission

properties so more of the ultrasound beam can be transmitted and received.

With extended target depths to 16 cm, this phantom provides greater scanner and transducer performance tests for resolution, depth of penetration and electronic caliper measurements. Extra pin targets are ideal for testing high frequency transducers which are designed to image the first few centimeters of human tissue. Resolution patterns and all vertical and horizontal targets are constructed of 0.1 mm nylon fiber. Three sets of axial resolution targets at 3, 8 and 14 cm, and spaced at 2.0, 1.0, 0.5 and 0.25 mm, make this phantom extremely effective for demonstrating high resolution details and challenge the ultrasound system's resolution

continued

WWW.GAMMEX.COM

PEO B.V.

info@gotopeo.com
www.gotopeo.com

The Netherlands

Havenweg 16, 6603 AS Wijchen
+31 (0)24 648 86 88

Belgium

Watermolenstraat 2, B-2910 Essen
+32 (0)3 309 32 09

CoC 34107894

VAT NL807859151B01

IBAN NL29 RABO 0356 1960 46

BIC RABONL2U





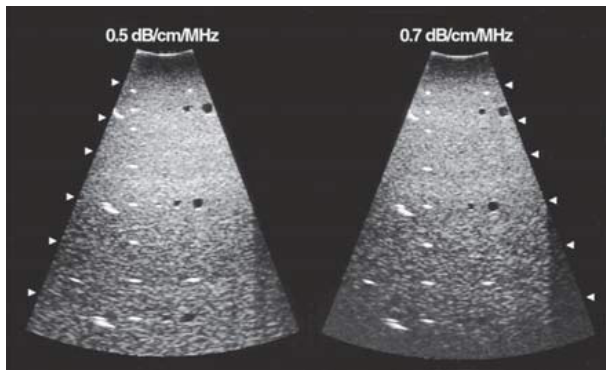
GAMME X4 06 LE

ULTRASOUND

continued from front...

capability. Scatter-free cylinders of 2, 4 and 6 mm diameters are embedded in the phantom representing blood vessels in human tissue

Optional accessories for the Gammex line of ultrasound phantoms include Soft Foam-Lined Carrying Case, Rigid Case, or the Precision Ultrasound Transducer Guide.



This ultrasound image demonstrates the 0.5 (left) and the 0.7 (right) dB/cm/MHz attenuation phantoms contained in the Gammex4 06 LE Dual Attenuation phantom.

SPECIFICATIONS

High Resolution Tissue Mimicking Gel

Speed of sound .. 1540 ± 10 m/s at 22 °C
Attenuation 0.5 and 0.7 ± 0.05 dB/cm/MHz

Targets

Anechoic Cysts

Diameters 2, 4 and 6 mm
Speed of sound .. 1540 ± 10 m/s at 22 °C
Attenuation 0.05 ± 0.01 dB/cm/MHz

Pin Targets

Diameter of nylon lines 0.1 mm (0.004 in)
Vertical spacing .. 10 mm at 2 to 4 cm deep;
20 mm at 4 to 6 cm deep
Horizontal spacing 30 mm at 2 and 12 cm deep;
additional pins spaced at 20 mm in 2 cm steps
Axial resolution. .3, .3 and 1.4 cm

Construction

Scanning surface Composite film
Walls Extruded ABS
Dimensions 23.2 x 8.25 x 18.5 cm
(9.25 x 3.25 x 7.25 in)
Weight 2.8 kg (6 lbs 5 oz)
All acoustic measurements at 4.5 MHz, 22 °C

