

AS 5000 - AEROSOL & IODINE SAMPLER

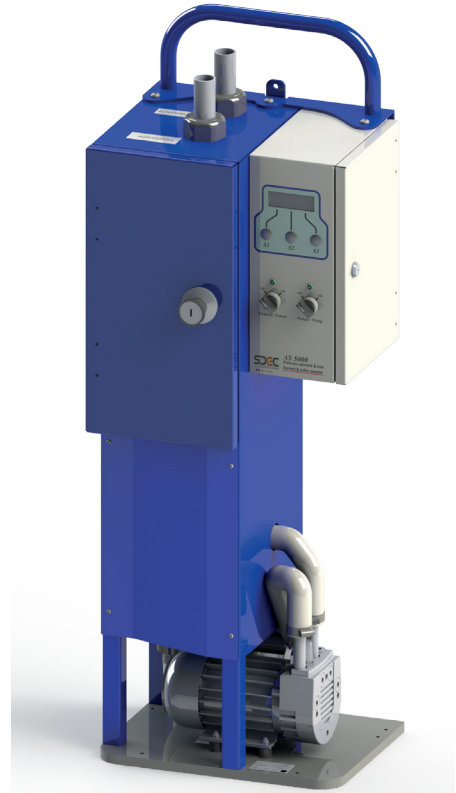
Aerosols and iodine trapping in stacks, in compliance with ISO 2889 standard

The AS 5000 is designed to enable sampling of aerosols and iodine on paper filters and cartridges. It is particularly adapted for continuous sampling in stacks according to ISO 2889 standard.

The AS 5000 includes many features, such as air flow regulation with standardized flow rate, differential pressure measurement with setting alarm threshold or recovery data by Ethernet communication.

MAIN FEATURES

- Automatic air flow regulation up to 90 SLPM
- Mass flowmeter: flow rate standardized
- Safety: sampling compartment and electrical separated with key lock
- Detection of filter clogging or accidental leakages with alarm report
- Alarm report via relay output, (optional Ethernet output)
- Sampling parameters settings and clogging level threshold protected by access code
- Stationary installation (wall mount) or mobile installation on wheels



AS 5000 in stationary configuration

FILTER HOLDER TPHP

The filter holder TPHP allows quick installation and recovery of filters.

A simple rotational movement of the handle releases the cartridge holder of filter paper holder without need of disconnecting it from air sampling circuit.



Filter holder TPHP (quick replacement of filters)



SDEC France
 Siège social Reignac-sur-Indre - 02 47 94 10 00
 Agence sud Rousset - 04 42 24 39 88
 info@sdec-france.com
 www.sdec-france.com

PEO B.V.

info@gotopeo.com
 www.gotopeo.com

The Netherlands

Havenweg 16, 6603 AS Wijchen
 +31 (0)24 648 86 88

Belgium

Watermolenstraat 2, B-2910 Essen
 +32 (0)3 309 32 09

CoC 34107894

VAT NL807859151B01

IBAN NL29 RABO 0356 1960 46

BIC RABONL2U



AS 5000 - AEROSOL & IODINE SAMPLER

Aerosols and iodine trapping in stacks, in compliance with ISO 2889 standard

TECHNICAL SPECIFICATIONS

Electrical specifications :

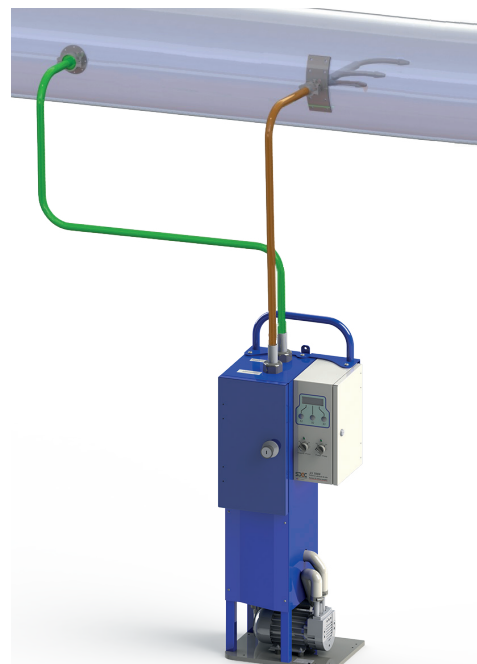
- **Mass flowmeter**
- **Adjustable air flow rate from 30 to 90 SLPM**
- **Detection of filter clogging or accidental leakages**
- **Display : 4 lines back-lit blue LCD screen**
- **Simultaneous display of :**
 - Sampling air flow rate
 - Duration and volume sampled since last start
 - Relative pressure difference from inlet to outlet of filter holder
 - Operation status
- **Sound alarm for all defect report**
- **Report of defects via alarm relay output**
- **Data recovery via Ethernet (option)**
- **On/off LED indicator**
- **Pump operation LED indicator**
- **Power supply : 230 Volts / 50 Hz**
- **Max power consumption : 450 Watts**
- **Differential circuit breaker (30 mA)**

Mechanical specifications :

- **Aluminium chassis**
- **Dimensions (w x h x d) : 438 x 924 x 298 mm**
- **Weight : 35 Kg**
- **Decontaminable polyester powder paint**
- **Dry rotary vane air pump : 30 to 90 SLPM**
- **Key lockable housing**
- **Paper filter holder : Ø 50 mm or 76 mm, cartridges : Ø 57 mm**
- **Operational ambient temperature : +2°C to + 45°C**



AS 5000 in mobile configuration



AS 5000 in stationary configuration installed on emission stack with isokinetic probe

Document BN-AS5000-EN-2021-11