

# SRS Film QA™

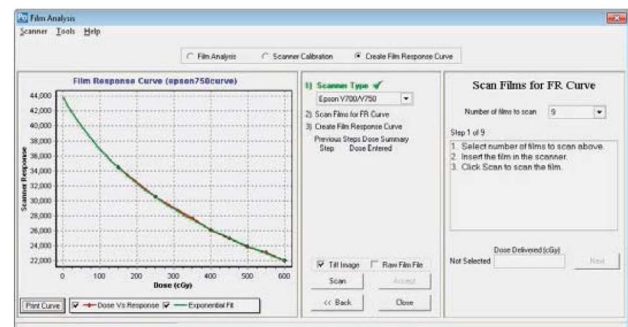
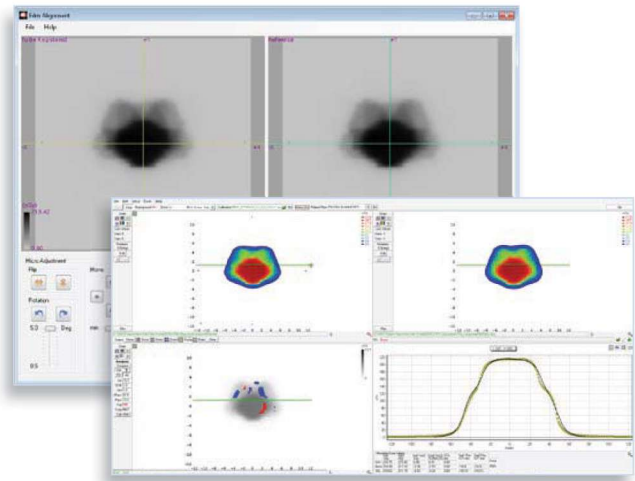
## Advanced Stereotactic Film Analysis

### SRS Film QA

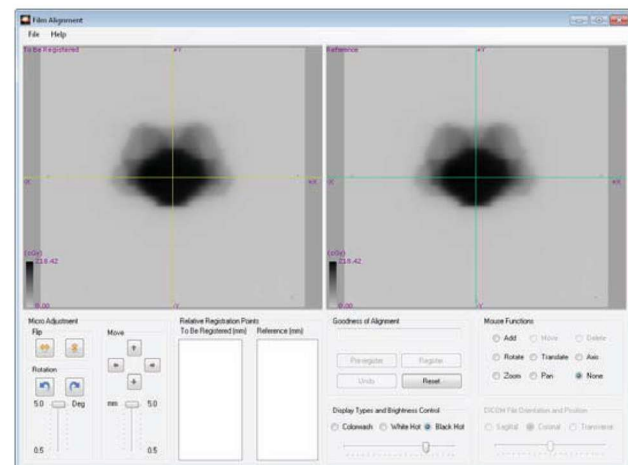
Co-developed with Accuray® for use with the CyberKnife® SRS treatment system, SRS Film QA operates within SNC Patient™ software to analyze and convert scanned film image data to dose for any stereotactic modality. The measured dose can then be compared to an imported patient treatment plan.

### Features

- > Film response curve:
  - No H&D curve required
- > Extract any arbitrary plane from a 3D dose object:
  - Compare against measured film
- > Phantom alignment check:
  - Verify phantom fiducials slice by slice
- > EPSON flatbed scanner support:
  - Use with EBT film
- > Use for IMRT, VMAT and SRS beams
- > Import film as a TIFF image
- > Analyze film as if it were MapCHECK measured data



A film response curve generated with multiple exposures at different MU's on one sheet of film



Film registration using a user defined marker (e.g. pin prick, bb, etc.)

## Analysis within SNC Patient Software



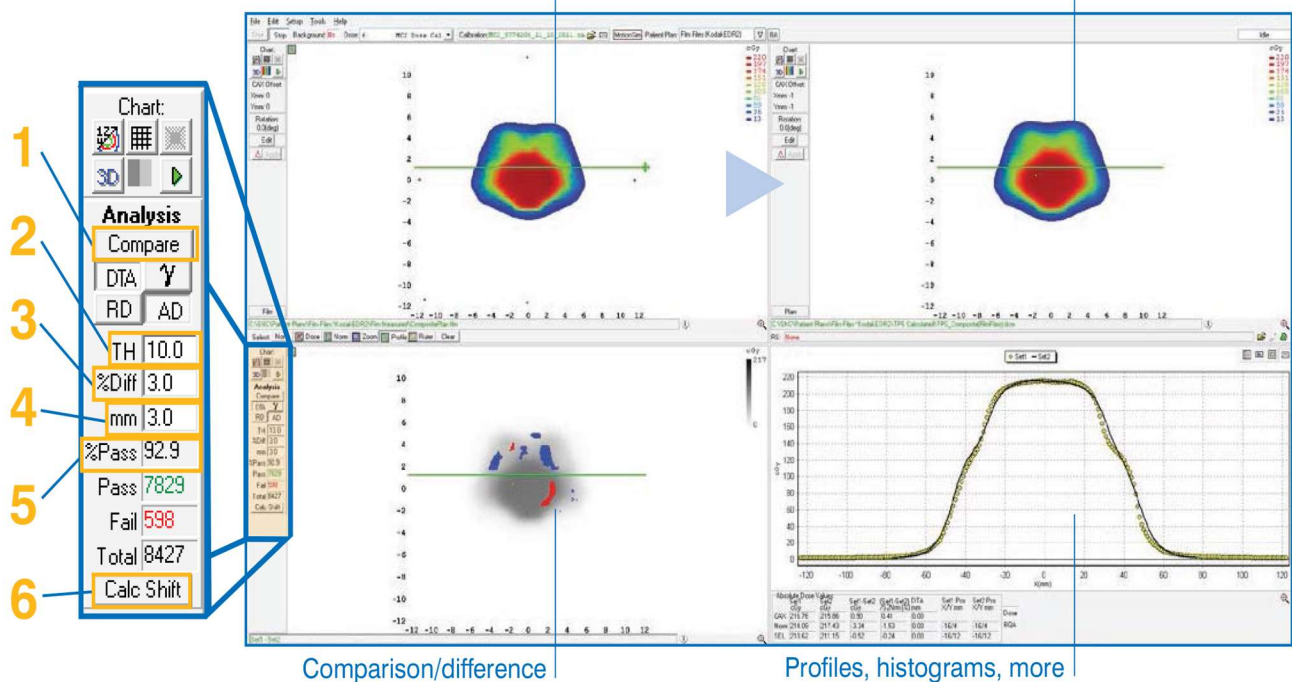
EPSON Scanner



## SNC Patient™ Software

Film

Plan



Comparison/difference

Profiles, histograms, more

- 1 **Compare:** Measure and then click compare to see the results against the planned file
- 2 **TH:** Isodose percentage line that defines the dose area to evaluate
- 3 **% Diff:** Percent acceptance criterion between Set 1 and Set 2 dose values
- 4 **mm:** Distance-to-agreement criterion
- 5 **% Pass:** Percentage of detector points that passed within the defined threshold with a pass/fail indication
- 6 **Calc Shift:** Determines a misalignment between measured & planned dose maps and automatically corrects if accepted by the user

## Requirements

Scanner/film requirements:	Epson® flatbed scanner for EBT® film
Compatible with:	DICOM RT, IMRT, VMAT and Stereotactic
Regional settings:	All Windows supported regions
Operating system:	Windows XP or Windows 7 (32 or 64 bit)

Processor:	Intel Dual Core 1.6GHz or higher
RAM:	2GB RAM
Drive space:	5GB
Video card:	Open GL, 32MB RAM, 1024x768 resolution

All data used is best available at time of publication. Data is subject to change without notice. All Content ©2013, Sun Nuclear Corporation. All Rights Reserved.

FilmQAD072013

PEO B.V.

The Netherlands

Belgium

info@gotopeo.com  
www.gotopeo.com

Havenweg 16, 6603 AS Wijchen  
+31 (0)24 648 86 88

Watermolenstraat 2, B-2910 Essen  
+32 (0)3 309 32 09

CoC 34107894  
VAT NL807859151B01

IBAN NL29 RABO 0356 1960 46  
BIC RABONL2U

